

Blood Heart

Science



Tomorrow's World

Computing



Y6 Computing

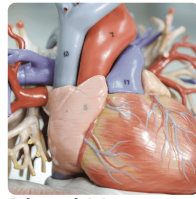
Computing



Frozen Kingdoms

Geography

Planned term	Autumn 1 (header is a placeholder)	Autumn 2 (header is a placeholder)	Spring 1 (header is a placeholder)	Spring 1 (header is a placeholder)
Mathematics	Maths at an appropriate individual level to support qualification pathway	Maths at an appropriate individual level to support qualification pathway	Maths at an appropriate individual level to support qualification pathway	Maths at an appropriate individual level to support qualification pathway
English	English to support qualification pathway Reading 'Blackberry Picking' and writing own protest poems Developing understanding of figurative language, to create own protest poems.	English to support qualification pathway Writing own stories with a clear structure and using dialogue and paragraphs. Students will be examined at Entry 2, Entry 3 and Level 1.	English to support qualification pathway Exploring Shakespeare - 'Romeo and Juliet' Completing written work at an Entry 2, Entry 3 or Level 1	English to support qualification pathway Reading a written play. Writing and filming own short plays and scenarios
Suggested text	'Blackberry Picking	Range of student selected fiction texts	Romeo and Juliet Westside Story	Bombs and Blackberries'
Communication & Language	Black History Month presentations	Discussion and debates	Challenging a point of view	Accepting criticism in a positive way
Reading & Phonics	RWI Fresh start (for those requiring phonics mastery) Word reading	RWI Fresh start (for those requiring phonics mastery) Word reading	RWI Fresh start (for those requiring phonics mastery) Word reading	RWI Fresh start (for those requiring phonics mastery) Word reading
Science	Hot stuff : Heat vs temperature, transfer of heat energy, changes of state	You Only Have One Life - Look After It : How lifestyle choices affect health, making healthier choices	Full Spectrum : Electromagnetic spectrum, uses and dangers, wireless technology	Creepy Crawlies: Photosynthesis, food webs, adaptation
Humanities	The Home Front in Britain during WW2 Researching black soldiers in both World Wars	Who is the greatest footballer in the World ever? Pele or Bobby Moore? Preparing for class debate	People and Protest. Civil Rights in the USA and the UK.	People and Protest: The Suffragettes and Feminism, LGBTQ and Disability discrimination. Exploring how we can make the world a fairer place for everyone.
Personal, social and health education	PSHE - Jigsaw at an appropriate level-(Being Me in My World)'Who am I and how do I fit?'	PSHE-Jigsaw at an appropriate level-(Celebrating Difference) Respect for similarity and difference. Anti-bullying and being unique	PSHE- Jigsaw at an appropriate level- (Dreams and Goals) Aspirations, how to achieve goals and understanding the emotions that go with this	PSHE-Jigsaw at the appropriate level -(Healthy Me)Being and keeping safe and healthy
RE	Festivals and Celebrations Explore why festivals are important to individual believers and the wider community.	Festivals and Celebrations Explore why festivals are important to individual believers and the wider community.	Explore the meaning behind New Year traditions, Chinese New Year, Holi and Nowruz celebrations	Jewish festival of Pesach, Holy Week and Orthodox and Coptic Easter
Art and design	Still life - Fantastic and Strange Research Artists related to theme, create a personal response. Add depth to work by exploring different mediums / observational drawings / line / tone / shape and form.	Still life - Fantastic and Strange-develop ideas about how you felt when looking at the work of particular artists. Create a final piece using your chosen artist as inspiration.	Geometric Art-choose favourite artist's work and create a personal response Add depth to work by exploring different mediums / observational drawings / line / tone / shape and form	Geometric Art-develop ideas about how you fell when looking at the work of particular artists. Create a final piece using your chosen artist as inspiration.



Blood Heart

Science



Tomorrow's World

Computing



Y6 Computing

Computing



Frozen Kingdoms

Geography

Physical education	Frequent Physical Activities	Individual or Partner Activities	Creative Activities	Team Competitive Activities
PD	Family concepts in different communities Introducing concept of LGBTF. Exploring marriages, characteristics and feelings	Good/bad friendships, Sharing experiences and interests.	Traditions in various cultures	discrimination due to race, gender, culture and sexuality
Computing	Online safety and identifying fakes	Patterns, Input and output devices, write an algorithm to complete an activity, decomposition	Counting, pictograms: Plan and conduct a survey on a theme and display results as a pictogram	Amination: Create a picture dictionary, present information on a topic using animation
Careers	Listening to and responding to the Careers Adviser about careers – life, learning and work. Complete job profiles with low level of support.	Researching the range of workplaces and what it is like to work there.	Independently write a job application for a classroom role and consider what you would look for in a successful candidate.	Understand what a team is and the different roles in a team including that of leader. Investigate Work experience opportunities
ASDAN/Life skills	Personal Development Programme Cooking	Personal Development Programme Cooking	Personal Development Programme Cooking	Personal Development Programme Cooking



## Champion

Physical education



## Firedamp and Davy Lamps

History

Planned term	Summer 1 (header is a placeholder)	Summer 2 (header is a placeholder)
Mathematics	Maths at an appropriate individual level to support qualification pathway	Maths at an appropriate individual level to support qualification pathway
English	English to support qualification pathway Communicating Experience-Reflections on our time at MHA KS4 and our hopes and dreams for the future. Completing the examination at either Entry 2, Entry 3 or Level 1.	English to support qualification pathway Writing CVs and job applications Filming a range of interviews.
Suggested text	Secret Diary of Adrian Mole	Collected speeches
Communication & Language	Creating a presentation - who am I presenting to?	Using language in different ways to share a message.
Reading & Phonics	RWI Fresh start (for those requiring phonics mastery) Word reading	RWI Fresh start (for those requiring phonics mastery) Word reading
Science	Food Factory: Soil and farming methods, plant propagation, selective breeding	Working with Science: Activities that look at how science is used in manufacture or industry
Humanities	Sustainable Tourism Looking at the advantages and disadvantages of global tourism	Sustainable Tourism Looking at the advantages and disadvantages of global tourism.
Personal, social and health education	PSHE -Jigsaw at the appropriate level (Relationships)Building positive, healthy relationships	PSHE -Jigsaw at the appropriate level (Changing Me) Coping positively with change.
RE	Religious Buildings Naming the features inside religious buildings and how they are used in worship.	Religious Buildings Understanding why religious buildings are important to believers and the wider community.
Art and design	Photography and Nature-choose favourite artist's work and create a personal response. Add depth to work by exploring different mediums / observational drawings / line / tone / shape and form	Photography and Nature-develop ideas about how you feel when looking at the work of particular artists. Create a final piece using your chosen artist as inspiration.
Physical education	Adventurous Activity	Athletic activities
PD	marriage/weddings/civil ceremonies and commitment	Exploring LGBTQ+ issues
Computing	Presentations, photos: Create a fact file or review in presentation software, searching for images to use and copyright	Letters, Text: Digital footprint, using text editing tools



Champion

Physical education



Firedamp and Davy Lamps

History

---

Careers

Understand what a charity is and how charities can create change. Charity fundraising project

Identify jobs that are more in demand or have been created because of advances in technology.

---

ASDAN/Life skills

Personal Development Programme Cooking

Personal Development Programme Cooking